



What to Expect as Corn Yields Face a Third Straight La Niña

Joana Colussi and Gary Schnitkey

Department of Agricultural and Consumer Economics
University of Illinois

Silvina Cabrini

National Institute of Agricultural Technology (INTA) - Argentina

July 11, 2022

farmdoc daily (12): 102

Recommended citation format: Colussi, J., G. Schnitkey, and S. Cabrini. "What to Expect as Corn Yields Face a Third Straight La Niña." *farmdoc daily* (12): 102, Department of Agricultural and Consumer Economics, University of Illinois at Urbana-Champaign, July 11, 2022.

Permalink: <https://farmdocdaily.illinois.edu/2022/07/what-to-expect-as-corn-yields-face-a-third-straight-la-nina.html>

Meteorologists are forecasting a third consecutive year of La Niña. The occurrence of two successive La Niña winters in the Northern Hemisphere is common, however, having three in a row is relatively rare. A triple La Niña has happened only twice since 1950. The last time La Niña was in place for three years in a row was from 1999 to 2001. But what could this mean for corn production in Brazil, the United States, and Argentina? In the previous article, we presented descriptive analyses of deviations from the trendline of soybean yields over the last 30 years (see *farmdoc daily*, [May 23, 2022](#)). In this article, we made the same analysis to evaluate corn yields in the aforementioned countries. La Niña is expected to weaken but persist through the Northern Hemisphere summer and into early winter 2022-23.

ENSO Forecast

La Niña and El Niño are phases of the El Niño–Southern Oscillation (ENSO) that typically occur every two to seven years, with neutral years in between. La Niña tends to create drought and dry conditions in many parts of the world, including southern Brazil, Argentina, and the U.S., while bringing additional precipitation to other areas, such as across northern Brazil. Current dry conditions in the U.S., for example, can reduce the productive potential of summer crops planted this year.

The Pacific Ocean has been in a La Niña phase for the last two years. The first occurred from late August 2020 to April 2021. This was followed by the current La Niña, which started in August 2021 and is still underway. La Niña is favored to continue into the Northern Hemisphere late summer (52% chance in July-September 2022, according to the Climate Prediction Center (CPC/IRI) Official Probabilistic El Niño–Southern Oscillation Outlook, July 5, 2022.

Corn Yields in the U.S.

In 2021, the United States corn yield was 177 bushels per acre, a record yield that was 5.6 bushels higher than the 2022 yield, according to the United States Department of Agricultural (USDA). In the last two La Niña episodes' harvests in 2020 and 2021 crop years, corn yields were 3.2 bushels per acre (-2%)

We request all readers, electronic media and others follow our citation guidelines when re-posting articles from farmdoc daily. Guidelines are available [here](#). The farmdoc daily website falls under University of Illinois copyright and intellectual property rights. For a detailed statement, please see the University of Illinois Copyright Information and Policies [here](#).

below the trendline and 0.35 bushels per acre (0.2%) above the trend, respectively (see last two blue dots in Figure 1). And the last time that three consecutive La Niña happened (1999-2000-2001), the yields were just on the trendline.

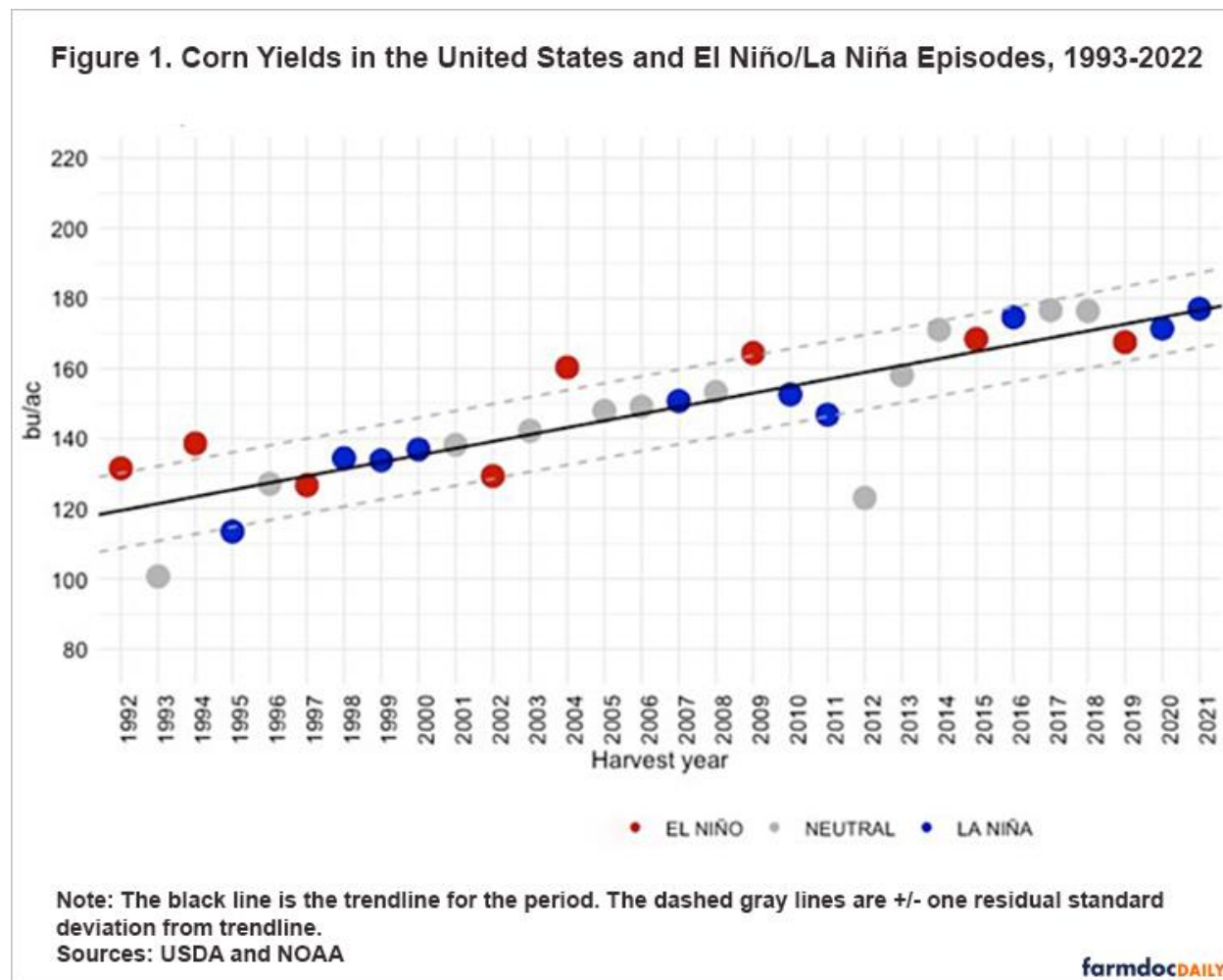
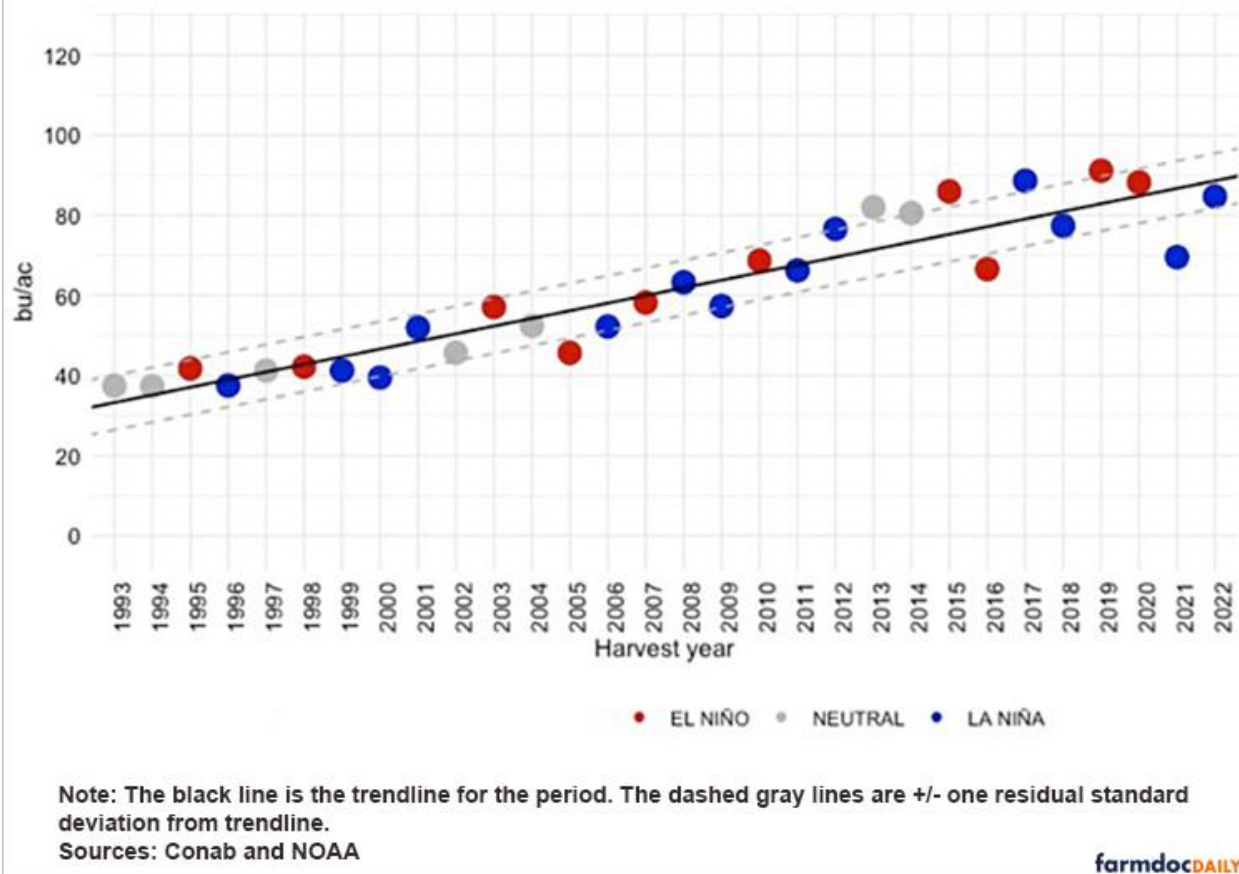


Figure 1 shows a slight relationship between ENSO phases and corn yield levels in the U.S., with most yields in El Niño years (red dots) above the trendline. If we focus on extreme values (residual standard deviation from trendline greater than one), note that all four very high yield levels happened in El Niño crop years (see the red dots in Figure 1) and none in a La Niña year. Also, two very low yield levels happened in Neutral years (1993 and 2012), and only one in a La Niña year (1995).

Corn Yields in Brazil

In Brazil, with 28% of the second corn crop (safrinha) area harvested by the first week of July, total production is expected to reach a record of 4.55 billion bushels, according to the National Supply Company (Conab). This production is 33% higher than last season's 3.43 billion bushels, when Brazil was affected by a severe drought. The expected yield is 85 bushels per acre, 22% higher than last season. In addition to the expected good yields, despite less than ideal weather, an 8.6% increase in planted area is another factor that will help Brazil break records with this season's production. The safrinha harvest started in June and will continue through September (see *farmdoc daily*, [June 15, 2022](#)).

Figure 2. Corn Yields in Brazil and El Niño/La Niña Episodes, 1993-2022



Brazil had very different results in corn yields during the last two La Niña years (see the last two blue dots in Figure 2). While in 2020/21 yields were 17 bushels per acre below trend (-20%), in the current 2021/22 season, the average corn yield was 2 bushels per acre below trend (-2%). This disparity can be explained by climate differences within Brazil and the wide distribution of first and second corn crops. Therefore, depending on the period of La Niña presence and strength of the phenomenon, yield declines in drought-affected states can be offset by gains in other states. More than 70% of the corn produced in Brazil is from the safrinha, planted mainly in the Midwest and Northeast – where La Niña events favor increased rain. On the other hand, the first corn crop is grown primarily in the Southern states – where La Niña events tend to decrease rainfall. In addition, the time season from the first and second corn crop are different.

In summary, Figure 2 shows the relationship between ENSO phases and yield levels in corn. Note that two out of six extremely high yield levels (residual standard deviation from trendline greater than one) happened in La Niña crop years, two in El Niño crop years and two in Neutral years. In addition, two out of four very low yield levels happened in La Niña crop years and two in El Niño years. Therefore, it is not possible to see a relationship between La Niña episodes and the corn yield levels in Brazil.

Corn Yields in Argentina

With 78% of the 2021/22 corn being harvested by July 7, according to the Ministry of Agriculture, Livestock and Fisheries in Argentina (MAGyP), production estimates are 1.93 billion bushels, stated by Bolsa de Cereales of Buenos Aires. The estimated yield is 13% below the previous harvest due a severe drought during the summer.

During the previous harvest under La Niña conditions, corn yields were 2.8 bushels per acre (-2%) below the trendline, and the current harvest yields, in a second consecutive La Niña, are 17.5 bushels per acre (-14%) below trend (see last two blue dots in Figure 3). In these two crop seasons, precipitation was below average at the beginning of the summer in Argentine Pampa (Buenos Aires, Córdoba, Entre Rios, La Pampa, and Santa Fé states), which provides 80% of corn production in the country.

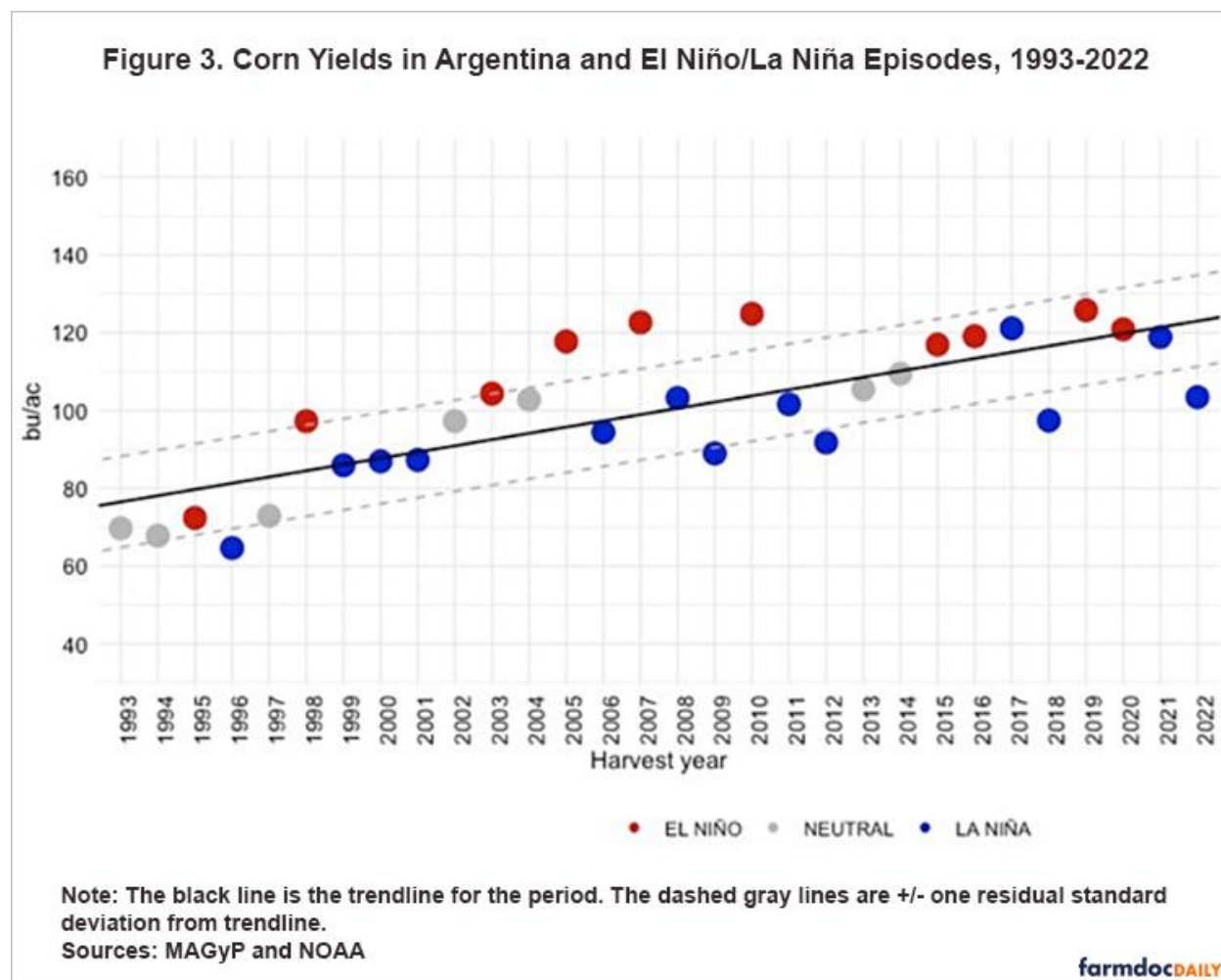


Figure 3 shows a relationship between ENSO phases and corn yield levels in Argentina. The majority of the yields in El Niño years (red dots) are above the trendline and the majority of yields in La Niña years (blue dots) are below the trendline. This pattern reflects the relationship reported in different studies (Iizumi et al., 2014; see *farmdoc daily*, December 17, 2020): the negative effect of La Niña and the positive effect of El Niño on corn yields in Argentina.

If we focus on extreme values (residual standard deviation from trendline greater than one), note that all very high yield levels happened in El Niño crop years (red dots). Also, all low yield levels happened in La Niña (blue dots) crop years. These data suggest a very low probability of having very high yields in La Niña years and very low yields in El Niño years. Also note that in four out of five two consecutive La Niña events corn yields have a negative standard deviation greater than one. However, the last time three consecutive La Niñas occurred (1999-2000-2001), the yields were just on the trendline.

Conclusions

This report analyzes the relationship between corn yields and ENSO phases from 1992 to 2022 for the U.S., Brazil and Argentina. Corn yields in the last crop years, both under La Niña conditions, show dissimilar results between countries and crop years. The yield was 2% below the trendline in Brazil for the current harvest and 20% below the trendline in the previous one. In Argentina yields were below the

expected values for both years (-2% and -14%) and in the U.S. -2% below the trend in 2020 and 0.2% above the trendline in 2021.

Over the last 30 years, the data show a strong relationship between ENSO episodes and corn yield levels in Argentina, a very weak relationship in the U.S., and no relationship in Brazil. It is important to note that each La Niña event will have different outcomes, therefore, they will present benefits to some agricultural producers while harming others.

Data Source and References

Bolsa de Cereales of Buenos Aires, Argentina, 2022. Agricultural Estimations.
<https://www.bolsadecereales.com/estimaciones-informes>

Cabrini, S., J. Colussi and G. Schnitkey. "Third Consecutive La Niña? What to Expect from Soybean Yields in the United States, Brazil and Argentina." *farmdoc daily* (12):75, Department of Agricultural and Consumer Economics, University of Illinois at Urbana-Champaign, May 23, 2022.

Colussi, J., G. Schnitkey and C. Zulauf. "Brazil Expecting Historic Safrinha Despite Less Than Ideal Weather." *farmdoc daily* (12):90, Department of Agricultural and Consumer Economics, University of Illinois at Urbana-Champaign, June 15, 2022.

Conab, National Supply Company. "Monitoring the Brazilian Grain Crop." Brasília, DF, v. 9, 2021/22 crop season, n.10, July 2022. Available in <https://www.conab.gov.br/info-agro/safras/graos/boletim-da-safra-de-graos>

Estimaciones Agrícolas. Ministerio de Agricultura, Ganadería y Pesca, Argentina.
https://www.magyp.gob.ar/sitio/areas/estimaciones/_archivos/estimaciones/220000_2022/220700_Julio/220707_Informe%20Semanal%20al%2007-07-2022.pdf

Iizumi, T., Luo, J. J., Challinor, A. J., Sakurai, G., Yokozawa, M., Sakuma, H., ... Yamagata, T. (2014). Impacts of El Niño Southern Oscillation on the global yields of major crops. *Nature Communications*, 5(May), 1–7. <https://doi.org/10.1038/ncomms4712>

Irwin, S. "The Impact of Preseason La Niña Episodes on Corn and Soybean Yields in Brazil and Argentina." *farmdoc daily* (10):213, Department of Agricultural and Consumer Economics, University of Illinois at Urbana-Champaign, December 17, 2020.

National Oceanic and Atmospheric Administration U.S. Department of Commerce (NOAA). Climate Prediction Center (CPC). https://origin.cpc.ncep.noaa.gov/products/analysis_monitoring/ensostuff/ONI_v5.php